
IDS Database, Calibration & Patch Update Process



Index

2. Finding IDS Software version
4. Downloading Database
6. Updating IDS
9. Download Calibration files
11. Download/Update Patch files



Software Verification

1. Press the **IDS Tab** in the upper left corner of the screen. Fig. 1.

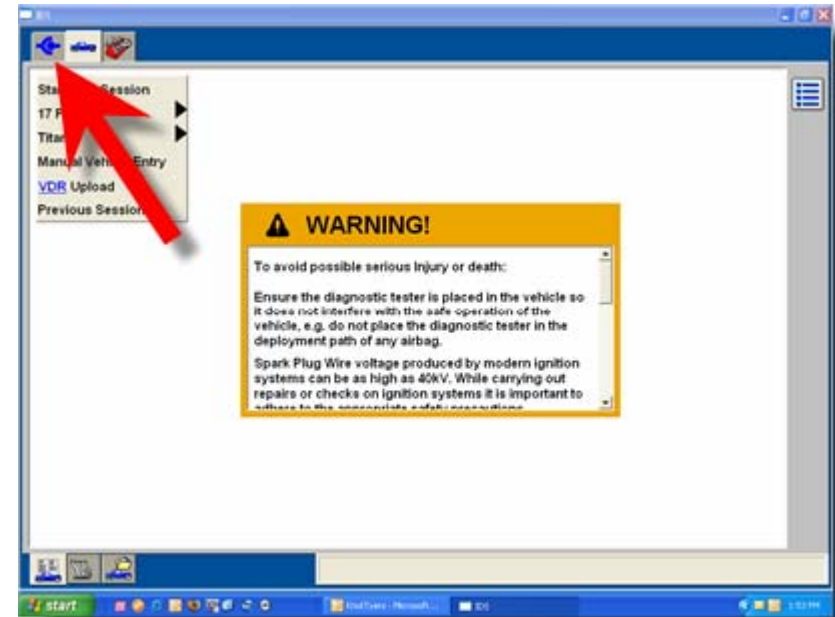


Fig. 1

2. Press the **System Information** tab in the lower left corner. Fig. 2.

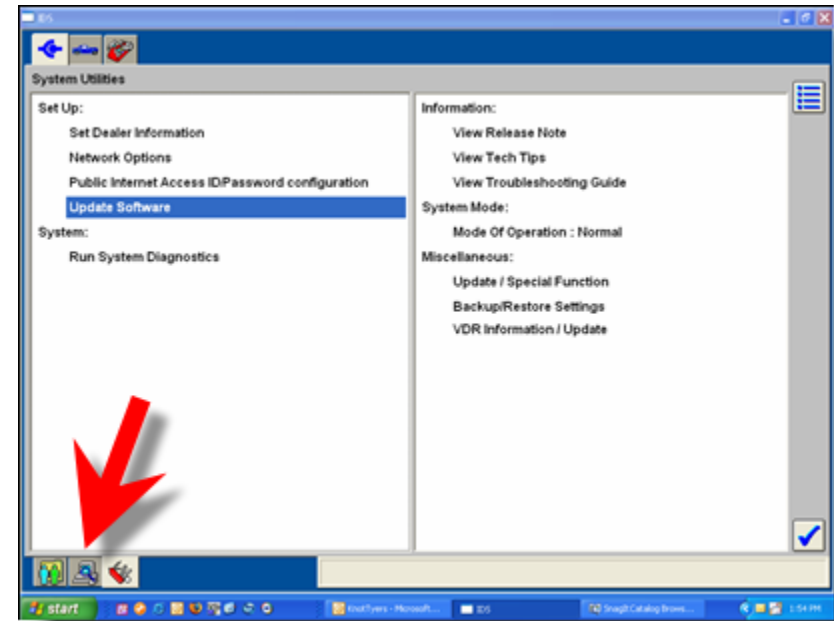


Fig. 2

Notes:

Verify IDS Software Level

The system information page will display the software release, database and patch level. In this example IDS software release is at IDS-41. Write this number down, we will need it in the next few steps.

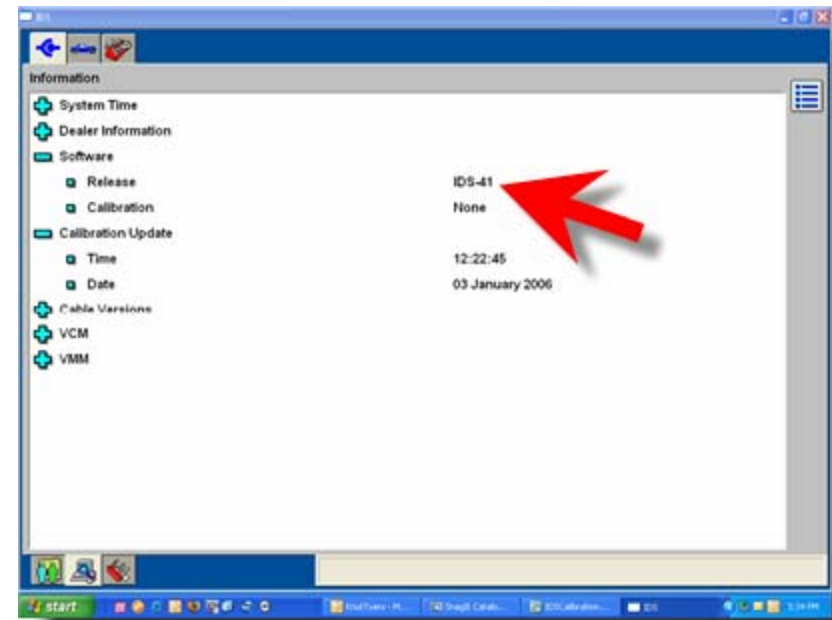


Fig 1

Database File Download

1. Visit <http://www.inFord.com> > ProTech website > Access to Service Publications > Rotunda Diagnostic > IDS > Module Reprogramming. Under Database Updates, find IDS-XX_0, same as IDS-41 in Page 3. Fig. 1. Click on the file.

2. Visit <http://www.motorcraftservice.com> > Diagnostic Tool Support > IDS > Module Reprogramming. Under Database Updates, find IDS-XX_Y, same as IDS-41 in Page 3. Fig. 1. Click on the file.

Note: Where 'XX' is the current IDS software release and 'Y' being the latest database level.

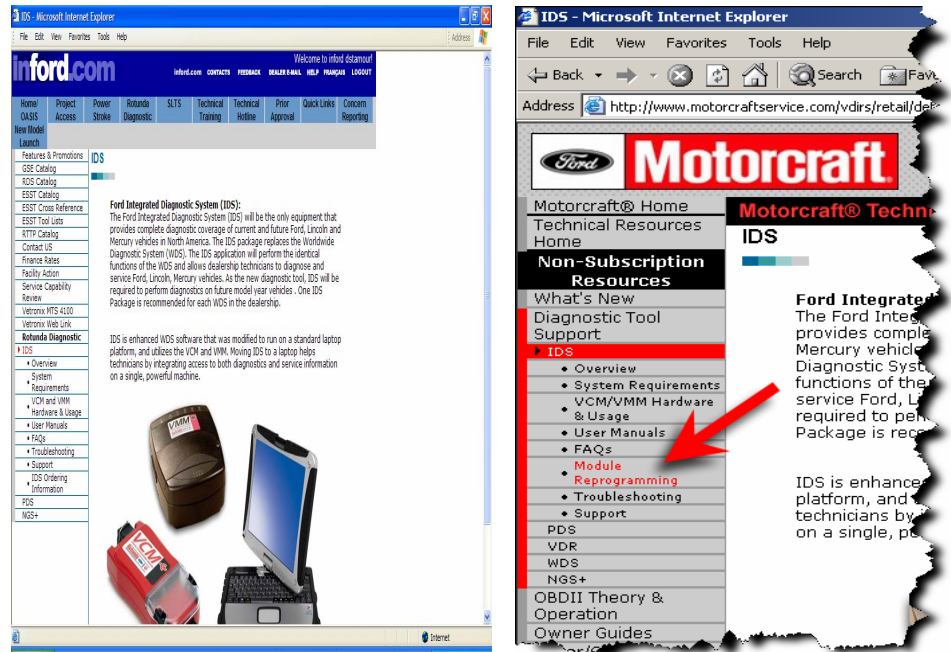


Fig. 1

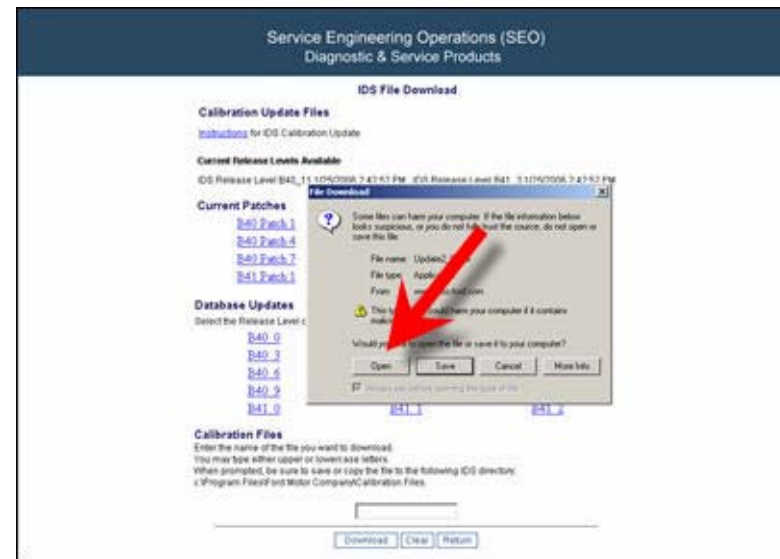


Fig. 2

Notes:

Database File Download

- 1. Depending on the OS (Operating System) you will get a window pop up as shown to the right in Fig. 1 and Fig. 2. Click on either **Run** or **Open**.

- 2. “**Unzip**” the file to either a floppy disk, Fig. 3, or to an USB key/ drive. Default is set to A:\ floppy drive. To use an USB key/drive, click **Browse** then select the USB key/drive. Fig. 4.

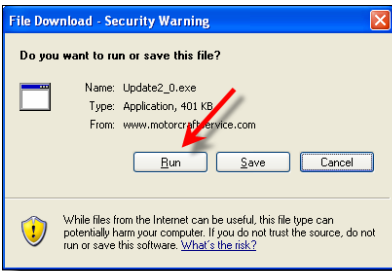


Fig. 1

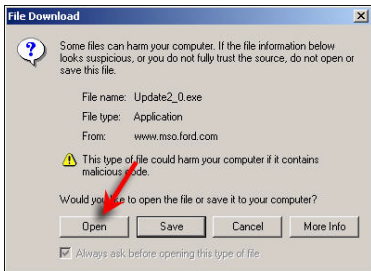


Fig. 2



Fig. 3



Fig. 4

Database Update

1. Navigate to “System Utilities” page and click “Update Software”. Fig. 1.

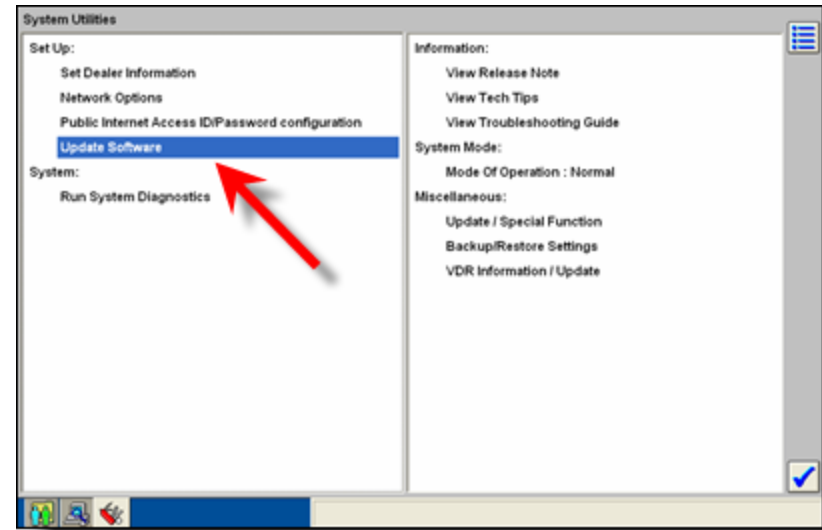


Fig. 1

2. Click on “Calibration Update” then the tick. Fig. 2.

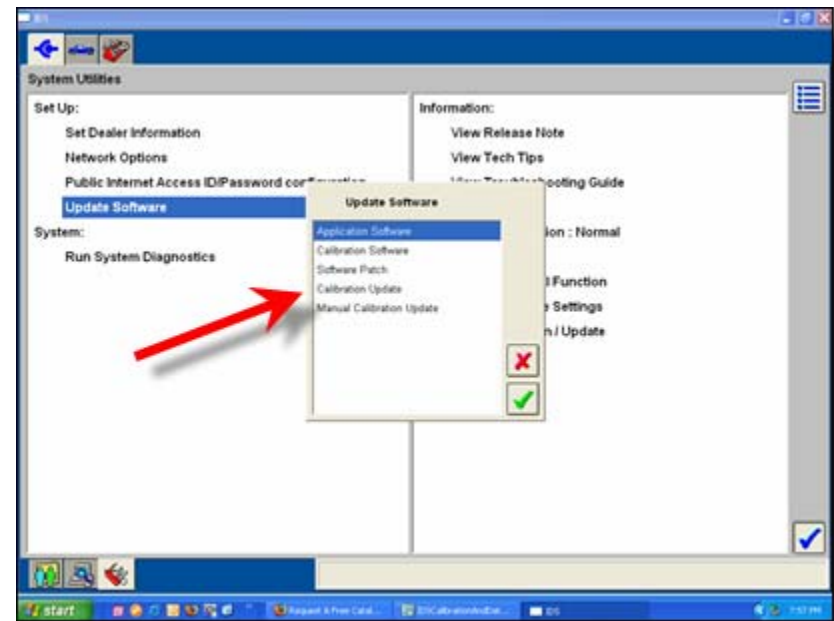


Fig. 2

Database Update cont.

1. IDS will display the media options.

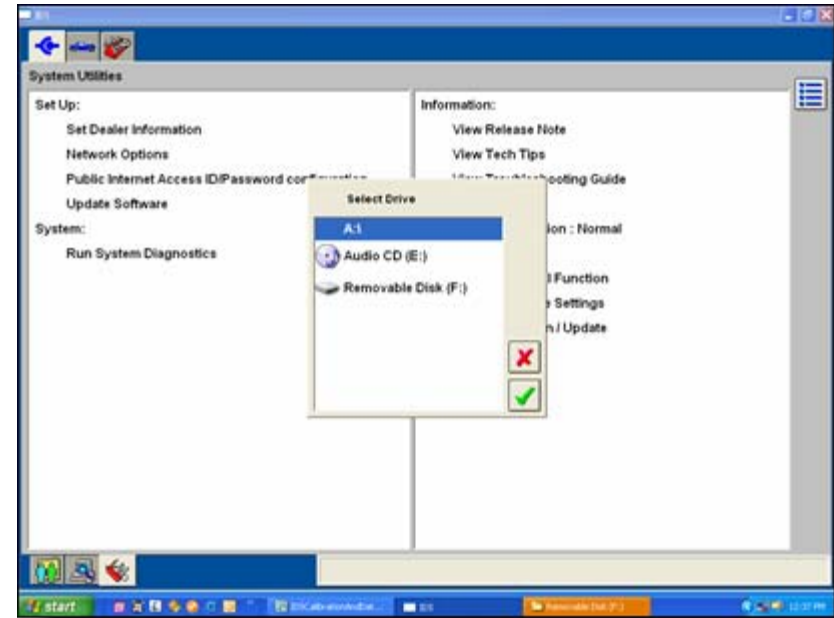


Fig. 1

2. Choose the media type and then the tick. IDS will then display a message indicating the file it expects to see.

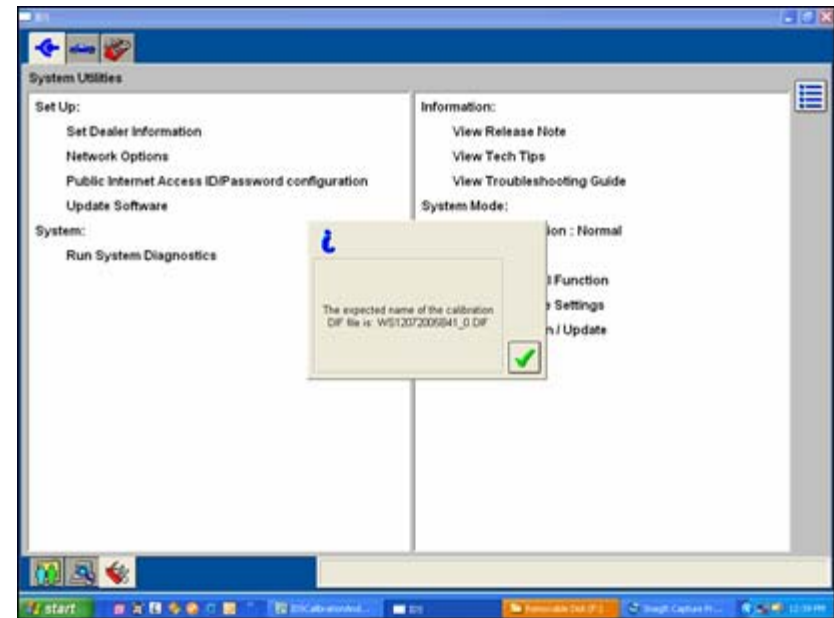


Fig. 2

Database Update cont.

1. IDS will upload the database files and update the database.

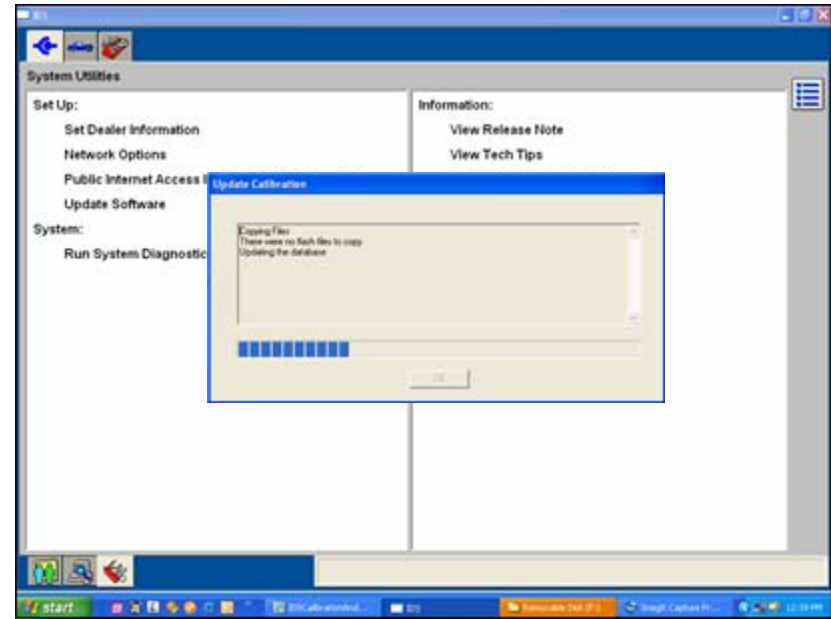


Fig. 1

2. When complete IDS will display a message indicating: **“There were no flash files to copy”** then display **“The DIF update is complete”** Click **OK** to finish.
3. Verify software release update. See page 9.

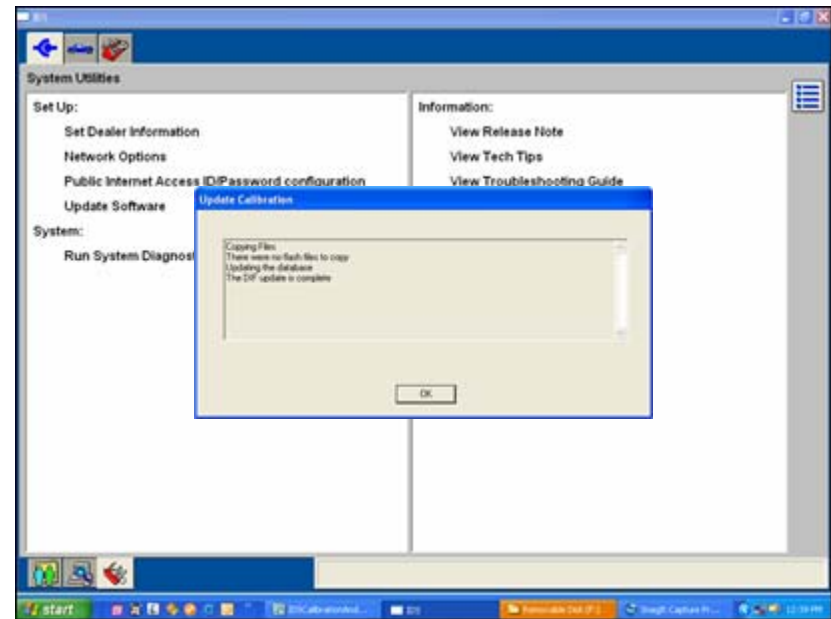
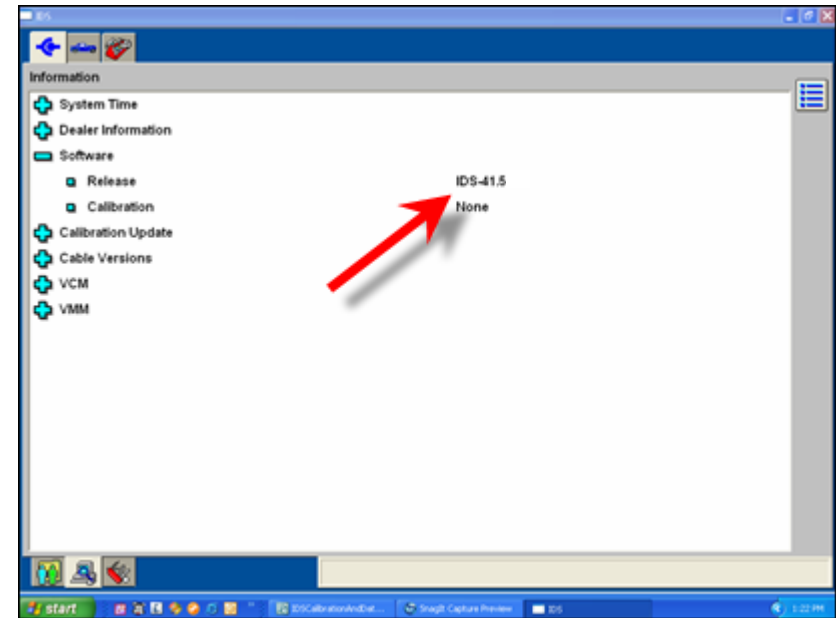


Fig. 2

Verifying Database Update

1. Navigate back to “**System Information**” page. Verify the software release level. In this example, the database release level is updated to IDS-41.5.



Download Calibration files

1. Visit <http://www.inFord.com> > ProTech website > Access to Service Publications > Rotunda Diagnostic > IDS > Module Reprogramming (see Page 4, Fig.1). Enter the Calibration file name. For example, if IDS states file **abcdefg.bin**, enter “**abcdefg**” then click on the download button.
OR
2. Visit <http://www.motorcraftservice.com> > Diagnostic Tool Support >IDS > Module Reprogramming (see Page 4, Fig.1). Enter the Calibration. For example, if IDS states file **abcdefg.bin**, enter “**abcdefg**” then click on the download button.
3. Download the file to either a Floppy disk, USB key/drive or CD ROM.
4. Copy the file from the removable media to C:\Program Files\Ford Motor Company\Calibration files directory.
5. If the IDS laptop has an internet connection, download the file(s) directly to C:\Program Files\Ford Motor Company\Calibration files directory.



Fig. 1

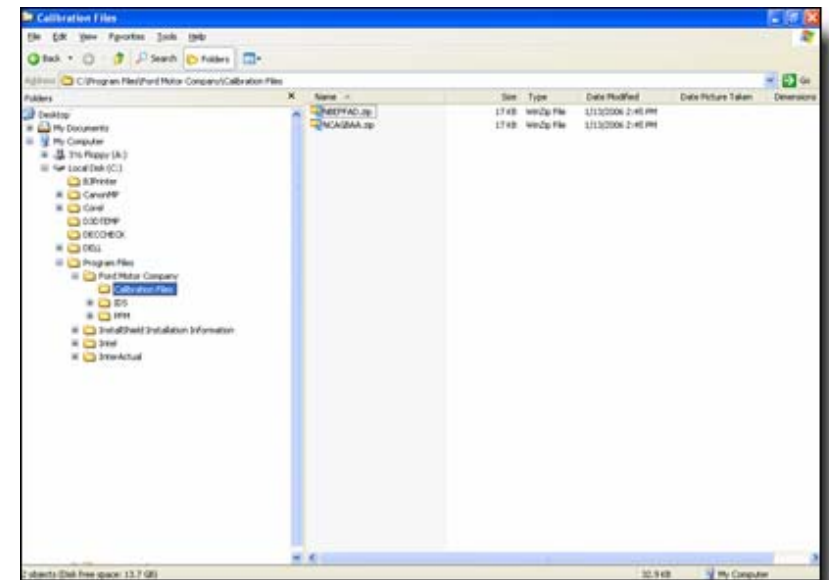


Fig. 2

Notes:

Download/Update Patch Files

1. Click on a Patch file as shown in Fig.1 then **“Save”** shown in Fig. 2.
2. Save the file(s) to a floppy disk, USB key/drive or CD ROM.
2. Repeat step 1 for all related Patch files. Note: All files should be copied to the same removable media.
3. Navigate to **“System Utilities”** page, (see page 6). Select **“Update Software”** > **“Software patch”**.
4. Select the media that contains the patch files. Press the tick. For example see page 7. Fig. 1.



Fig. 1

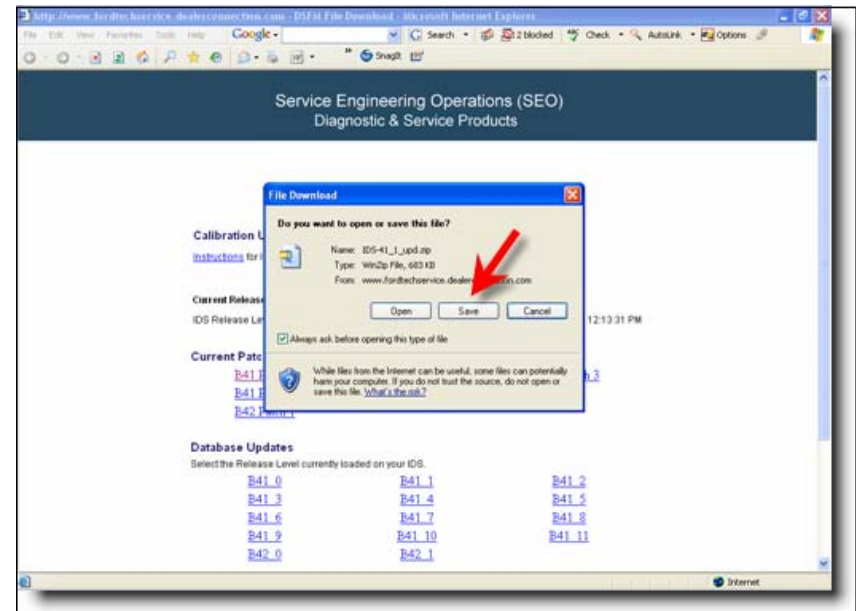


Fig. 2

Verifying Patch Update

5. Navigate back to “**System Information**”. IDS will show the software release. In this example, the patch release level is updated to IDS-41.5 P3.

